

SUPERB QUALITY
PRIME PRECISION
UNRIVALED PERFECTION

<https://zwintelligent.com>

Dongguan Zhuowei Intelligent Technology Co.



Profile

Established in 2019, Dongguan Zhuowei Intelligent Technology Co., Ltd., located in Dongguan, Guangdong Province, China, specializes in the research, production, and sales of automated equipment for small precision liquid filling machines. With extensive expertise in automatic oil-filling machines within the electronic atomizer (CBD) industry, we are committed to providing high-quality and high-precision automated solutions to customers.



Core Businesses

- **Precision Liquid Filling Machines**

Focus on the development and manufacturing of small precision liquid filling machines.

- **Automatic Oil-Filling Machines for Electronic Atomizers**

Provide high-precision oil-filling machines for the CBD and THC industries.

- **Customized Automation Equipment**

Tailored solutions meet the specific needs of customers.

Technological Advantages

R&D Strength



Drive technological innovation with our professional R&D team.

Innovative Design



Enhance the stability and reliability of the equipment by utilizing advanced control systems and technologies.

Quality Assurance



Ensure high performance and durability of the products by implementing strict quality control processes.

Development Vision

Strive to become a global leader in electronic atomizer automation equipment supply.

Expand international market share and enhance brand influence.

Drive technological innovation to meet diverse customer needs.

PRODUCT CATALOG

1 CBD Oil Filling Machine and Capping Machine00-18

2 Nicotine Oil Filling Machine19-23

3 Flower Filling Machine24-30

① CBD Oil Filling Machine and Capping Machine

ZW-FG0101-02

ZW-22107-08

ZW-45013-14

ZW-100R03-04

ZW-221F09-10

ZW-YMSD15-16

ZW-JY0305-06

ZW-350JY11-12

ZW-YM10T17-18

1. ZW-FG01

Handheld Oil Filling Gun

Overview

The handheld oil filling is a simple and lightweight tool designed specifically for customers with small-scale oil filling needs. This compact machine consists of two parts: a temperature control box and a heated injector. The control box is compatible with 110V-240V power sources. Heating activation, temperature settings, and other operations are all managed through the control box. The injector features a transparent chamber, allowing users to easily monitor the remaining oil. Additionally, the piston rod is equipped with a knob-style flow regulator for precise adjustment of the filling volume.

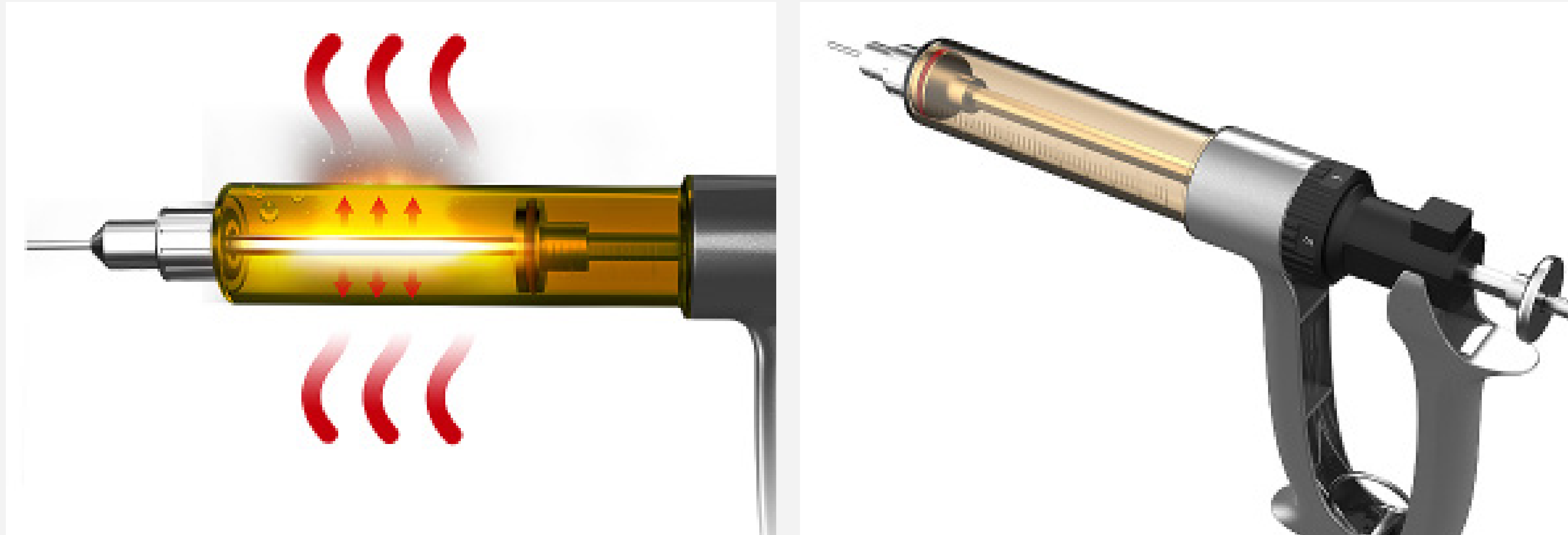


· SUPERB QUALITY ·

· SUPERB QUALITY ·

Specifications

| | | | | | |
|-----------------------------|--------------------------|-------------------------|------------------------------------|---|------------------------|
| Model | ZW-FG01 | Power Supply (Optional) | AC100V-240V | Temperature Control Component | Oil Chamber |
| Customization | Nonsupport | Applicable Use | CBD/THC/Nicotine Oil/Other Liquids | Filling Accuracy | 0.02 |
| Filling Heads | 1 | After-Sale Service | 3-year Warranty | Applicable Bottle Height | Universal |
| Heating Range | Room Temperature - 120°C | Level of Automation | Manual | Power | 200W |
| Filling Volume | 0.5/1.0/1.5/2.0ml | Oil Capacity | 25ml/50ml | Applicable Industry | CBD/THC/Vape/Cosmetics |
| Applicable Bottle Diameter | Above 2 mm | Production Capacity | 7-14 pcs/min | Packaging | Carton Packaging |
| Packaged Dimensions/ Weight | | | 460*300*130mm/ about 2.5 kg | Whether Cross-Border Export Exclusive Supply Source | Yes |



Product Functions and Features

- Lightweight and portable, with a total packed weight of only 2.5 kg, making it ideal for oil filling operations in non-stationary locations.
- The transparent container allows for easy monitoring of the liquid status and remaining volume.
- With minimal switches and buttons, it is easy to operate without any difficulty.
- Affordable and cost-effective, it is suitable for customers with short-term oil filling needs.

1. ZW-100R

High-Precision Oil Filling Machine

Upgraded 510 Cartridge Disposable Vape CBD/THC High-Precision Semi-Automatic Oil Filling Machine ZW-100R.

Overview

The ZW-100R is one of the most widely used oil filling machines in the cannabis industry. Since 2019, it has served thousands of customers, earning high market recognition and visibility. This model remains a staple in the cannabis filling industry due to its compact size, ease of operation, and high stability. Through years of optimization and upgrades, the temperature control and precise dosing systems have been fully integrated into the PLC, allowing quick and accurate setting of parameters such as temperature, filling volume, and filling speed via the touch screen.



· SUPERB QUALITY ·

· SUPERB QUALITY ·

Specifications

| | | | | | | | |
|--------------------------------------|--------------------------|-------------------------|-------------------------------------|---|----------------------------------|--------------------------|------------------------|
| Model | ZW-100R | Working Principle | Injection Pump | After-Sale Service | 1-Year Warranty | Applicable Bottle Height | Universal |
| Customization | Support | Control Method | Touch Screen + PLC + Custom Program | Level of Automation | Semi-Automatic | Filling Principle | Negative Pressure |
| Filling Heads | 1 | Power Supply (Optional) | AC100V-120V; AC200V-240V | Oil Capacity | 300ml/500ml | Drive Method | Motor + Ball Screw |
| Heating Range | Room Temperature - 120°C | Applicable Use | CBD/THC/Nicotine Oil/Other Liquids | Production Capacity | 10-20 pcs/min | Power | 450W |
| Filling Volume | 0.2ml-3ml/0.2-5ml | Screen Size | 7 inches | Temperature Control Component | Oil Tank, Injection Pump, Handle | Applicable Industry | CBD/THC/Vape/Cosmetics |
| Applicable Bottle Diameter | Above 2 mm | Dimensions / Net Weight | 240*380*300mm / about 14kg | Filling Accuracy | 0.01 | Packaging | Export Wooden Case |
| Dimensions with Wooden Case / Weight | | | 350*490*365mm / about 20 kg | Whether Cross-Border Export Exclusive Supply Source | | | Yes |

Product Functions and Features

- Precise Quantification: The filling volume is controlled by a motor and a screw rod, achieving an accuracy of up to 99%.
- Accurate Temperature Control :The sensitive temperature sensor ensures a deviation within $\pm 3^{\circ}\text{C}$. The temperature can be set freely between room temperature and 120°C .
- Medical-Grade Materials: All parts that come into contact with oil are made of 316/304 stainless steel, and the sealing parts use special fluororubber material.
- Simple Operation: Parameter settings are straightforward, and maintenance is easy.

These advantages make the ZW-100R highly popular among CBD, THC, and nicotine oil customers in the United States, Canada, and beyond, offering an excellent solution for both heated and non-heated liquid filling needs worldwide.

High Precision

$\pm 1\%$ filling accuracy, meeting the needs of precise liquid filling.

Heating Function

ZW-100R features a heating function with a range from ambient temperature to 120°C , helping to reduce liquid viscosity for easier filling.

Efficient Production

Capable of producing 10 to 20 units per minute, suitable for small to medium-scale production.

User-Friendly Operation

Equip with a 7-inch touchscreen, and combine with PLC control and custom programming for intuitive and easy operation.

Strong Stability

Utilize a motor and ball screw drive system to ensure smooth and reliable operation.

High Flexibility

Compatible with bottles with a diameter of over 2mm, accommodating a wide range of containers.

Versatility

Capable of handling various concentrations of e-liquids, including CBD/THC oils, nicotine e-liquids, and suitable for filling a variety of liquids.

Customization Support

Offer tailored solutions to meet specific production needs.

Portable Design

Designed for easy transport without sacrificing the heating function.

Durability

Robust construction ensures the machine is suitable for long-term use.

After-Sale Service

Provide a one-year warranty ensures customer satisfaction with their usage experience.

Export-Ready

Adapt for cross-border trade to meet the demands of international markets.



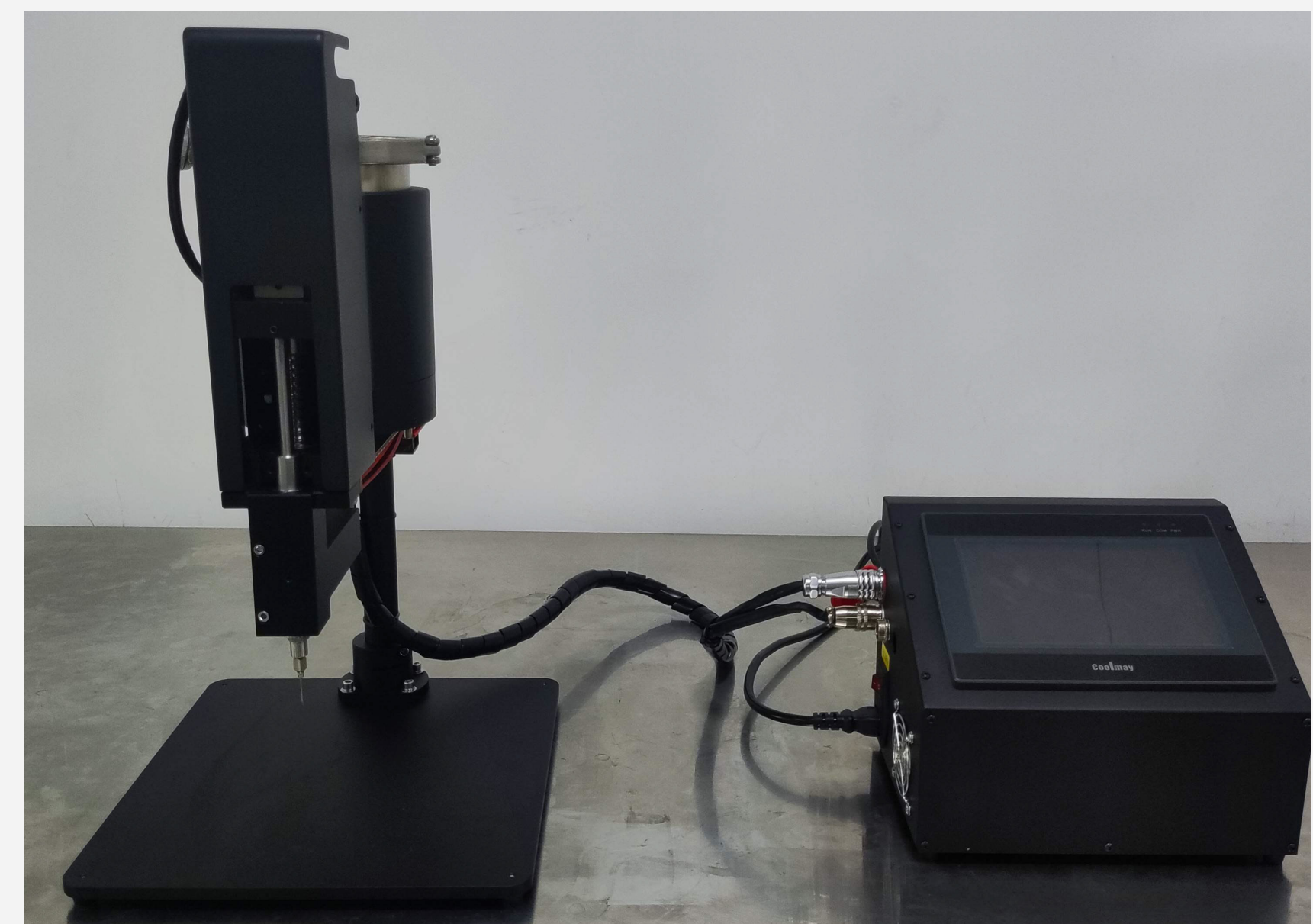
1. ZW-JY03

High-Precision Oil Filling Machine

Overview

The ZW-JY03 is a high-precision oil filling machine with manual oil collection. Compared to the 100R model, it offers the following

1. With a heating power of up to 700W, it significantly reduces the heating time.
2. The 1.2L capacity oil tank minimizes the frequency of refills, saving labor.
3. Without a handle, it leaves less residue.



· SUPERB QUALITY ·

· SUPERB QUALITY ·

Specifications

| | | | | | | | |
|--------------------------------------|--------------------------|-------------------------|-------------------------------------|---|--------------------------|--------------------------|------------------------|
| Model | ZW-JY03 | Working Principle | Injection Pump | After-Sale Service | 1-Year Warranty | Applicable Bottle Height | Universal |
| Customization | Support | Control Method | Touch Screen + PLC + Custom Program | Level of Automation | Semi-Automatic | Filling Principle | Negative Pressure |
| Filling Heads | 1 | Power Supply (Optional) | AC100V-120V; AC200V-240V | Oil Capacity | 1200ml | Drive Method | Motor + Ball Screw |
| Heating Range | Room Temperature - 120°C | Applicable Use | CBD/THC/Nicotine Oil/Other Liquids | Production Capacity | 10-20 pcs/min | Power | 700W |
| Filling Volume | 0.2ml-3ml/0.2-5ml | Screen Size | 7 inches | Temperature Control Component | Oil Tank, Injection Pump | Applicable Industry | CBD/THC/Vape/Cosmetics |
| Applicable Bottle Diameter | Above 2 mm | Dimensions / Net Weight | 350*320*480mm/about 16kg | Filling Accuracy | 0.01 | Packaging | Export Wooden Case |
| Dimensions with Wooden Case / Weight | | | 350*490*365mm/about 22kg | Whether Cross-Border Export Exclusive Supply Source | | | Yes |

Product Functions and Features

- Fixed oil filling for more convenient operation, and equipped with a larger capacity oil barrel.
 - With a high heating power of up to 700W, the heating efficiency is excellent. Through indirect heating with aluminum components, the heating is uniform. Two temperature sensors detect the temperature of the oil barrel and oil path separately, enabling precise temperature control.
 - The modular structure makes inspection and maintenance easier. The high-definition 7-inch large screen, arranged at an angle, improves usability and enhances the human-machine interaction experience.
 - Medical-Grade Materials: All parts that come into contact with oil are made of 316/304 stainless steel, and the sealing parts use special fluororubber material.
-

Applicable Products: CBD/THC, 510 series, ceramic cartridges, cotton wick cartridges, integrated cotton devices, integrated vape pens, Luer lock syringes, G5, CCELL, vape pens, 0.5ML/0.8ML/1.0ML, Delta 8, Delta 9.

Applicable Liquids: All viscosity e-liquids, CBD/THC oils, nicotine e-liquids, oil for Luer lock syringes, high-value essential oils, hand sanitizers, and other liquids requiring high precision and viscosity control.

Target Customers: ZW-100R is one of the most popular products among CBD/THC/nicotine e-liquid customers in the U.S. and Canada. It is also widely favored by customers worldwide for both heated and non-heated liquid injection applications.

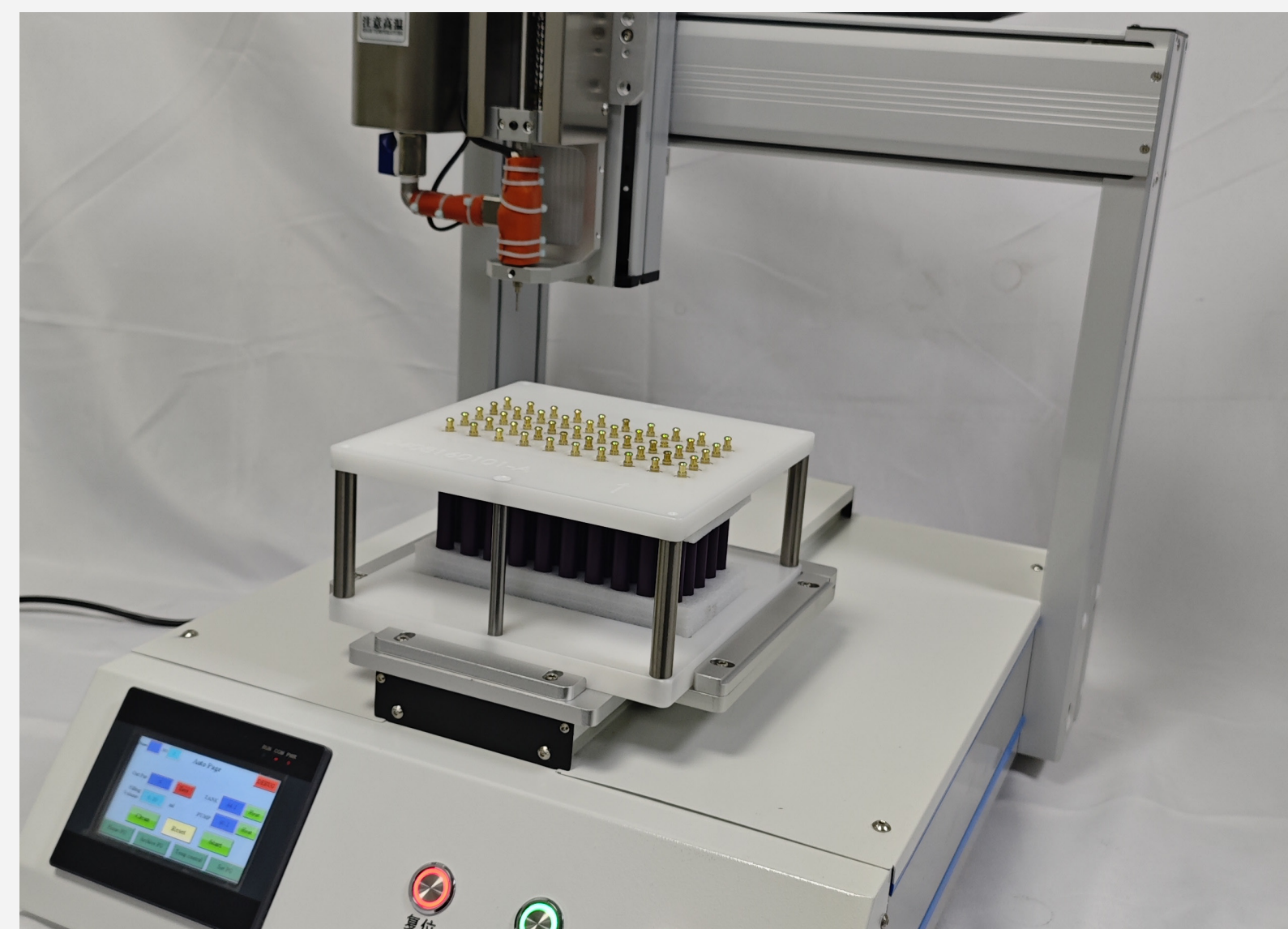


1. ZW-221

Automatic Oil Filling Machine (Single Filling Head)

Overview

ZW-221 is an automatic oil filling machine that boasts higher efficiency and cost savings in labor compared to ZW-100R. This model utilizes a three-axis platform controlled precisely through a touchscreen, PLC, and self-authored program to achieve automated oil filling. Unlike common automated machinery that typically requires a certain technical threshold for operation, this model has undergone significant optimization in human-machine interaction. The user interface is simple and easy to understand, allowing novices to operate it directly after simple training. This model, the first of its kind designed by our factory in the cannabis industry, draws on years of technical accumulation, refinement, and optimization. These efforts have rendered this machine impeccable in both stability and efficiency, making it the top-selling automated oil filling equipment in the cannabis industry.



· SUPERB QUALITY ·

· SUPERB QUALITY ·

Specifications

| | | | | | | | |
|----------------------------|-----------------|-------------------------|-------------------------------------|--------------------------|-------------------|---|--------------------------|
| Model | ZW-221 | Control Method | Touch Screen + PLC + Custom Program | Level of Automation | Automatic | Drive Method | Motor + Ball Screw |
| Customization | Support | Power Supply (Optional) | AC100V-120V; AC200V-240V | Oil Capacity | 300ml/500ml | Power | 700W |
| Filling Heads | 1 | Applicable Use | CBD/THC/Nicotine Oil/Other Liquids | Production Capacity | 10-30 pcs/min | Applicable Industry | CBD/THC/Vape/Cosmetics |
| Filling Volume | 0.2-3ml/0.2-5ml | Screen Size | 3.5 inches | Filling Accuracy | 0.01 | Packaging | Export Wooden Case |
| Applicable Bottle Diameter | Above 2 mm | Dimensions / Net Weight | 520*640*650mm / about 46 kg | Applicable Bottle Height | 5-100mm | Dimensions with Wooden Case / Weight | 570*700*795mm/about 68kg |
| Working Principle | Injection Pump | After-Sale Service | 1-Year Warranty | Filling Principle | Negative Pressure | Whether Cross-Border Export Exclusive Supply Source | Yes |

Product Functions and Features

- Automated production, high efficiency, significant savings in labor costs.
- Easy to operate, simple to learn, quick to master, and accessible to all users.
- High filling precision, stable and durable, easy to clean, and easy to maintain.
- Compact size, lightweight, no air pump, and noise-free.

High-Precision Oil Filling

±1% filling accuracy, suitable for applications requiring precise oil filling.

Heating Function

The ZW-221 is equipped with a heating feature, essential for maintaining fluidity at specific temperatures for easier injection.

Automated Operation

As an automatic oil filling machine, ZW-221 can achieve pure electric control of the liquid injection process, improving work efficiency.

User-Friendly Operation

Simple design makes it easy to understand and operate.

Compact Size

Space-saving design relative to its functionality.

Broad Applicability

Suitable for bottles with a diameter above 2mm and heights ranging from 5 to 100mm, and capable of handling various concentrations of vape oils, including CBD/THC oils, and nicotine oils.

Customization Support

Offer tailored solutions to meet specific production needs.

Stable Performance

Use a motor and ball screw drive system combined with an injection pump to ensure consistent and stable filling.

Advanced Control System

Feature a touchscreen with PLC and custom programming for smarter operation.

Efficient Production Capacity

Produce 10 to 30 units per minute, ideal for medium-scale production lines.

Premium After-Sale Service

Provide a one-year warranty to safeguard customer interests.

Cross-Border Export

Designed as a dedicated supply for cross-border trade, meeting the demands of international markets.



1. ZW-221F

Automatic Oil Filling Machine (Single Filling Head)

Overview

The ZW-221F is a derivative model based on the ZW-221, with similar functions and usage. To meet the demands of large-scale production, the oil tank capacity has been improved to 3000ml. This model is equipped with a variable-speed stirring motor that stirs the liquid while it is heated, ensuring the oil is evenly and thoroughly heated inside the tank.



· SUPERB QUALITY ·

· SUPERB QUALITY ·

Specifications

| | | | | | | | |
|----------------------------|-----------------|-------------------------|-------------------------------------|--------------------------|-------------------------------|---|--------------------------|
| Model | ZW-221F | Control Method | Touch Screen + PLC + Custom Program | Level of Automation | Automatic | Drive Method | Motor + Ball Screw |
| Customization | Support | Power Supply (Optional) | AC100V-120V; AC200V-240V | Oil Capacity | 3.0L (with stirring function) | Power | 900W |
| Filling Heads | 1 | Applicable Use | CBD/THC/Nicotine Oil/Other Liquids | Production Capacity | 10-30 pcs/min | Applicable Industry | CBD/THC/Vape/Cosmetics |
| Filling Volume | 0.2-3ml/0.2-5ml | Screen Size | 3.5 inches | Filling Accuracy | 0.01 | Packaging | Export Wooden Case |
| Applicable Bottle Diameter | Above 2 mm | Dimensions / Net Weight | 520*640*650mm/about 56kg | Applicable Bottle Height | 5-100mm | Dimensions with Wooden Case / Weight | 570*700*795mm/about 78kg |
| Working Principle | Injection Pump | After-Sale Service | 1-Year Warranty | Filling Principle | Negative Pressure | Whether Cross-Border Export Exclusive Supply Source | Yes |

Product Functions and Features

- Large-capacity oil tank reduces the frequency of refilling, saving labor and meeting the demands of large-scale production. It also features a stirring function.
- High filling precision, stable and durable, easy to clean, and easy to maintain.
- Easy to operate, simple to learn, quick to master, and accessible to all users.
- Compact size, lightweight, no air pump, and noise-free.

High Precision

±1% filling accuracy, suitable for applications requiring high precision.

Heating Function

ZW-221F features a heating function with a range from ambient temperature to 120°C, helping to reduce liquid viscosity for easier filling.

Automated Operation

As an automatic oil filling machine, it can achieve pure electric control of the liquid injection process, improving work efficiency.

User-Friendly Operation

Simple design makes it easy to understand and operate.

Moderate Size

The automatic machine is reasonably sized to fit various production environments.

Broad Applicability

Suitable for bottles with a diameter greater than 2mm and heights ranging from 5 to 100mm, handling liquids from thin to thick.

Customization Support

Tailored solutions available to meet specific production needs.

Stable Performance

Use a motor and ball screw drive system combined with an injection pump to ensure consistent and stable filling.

Advanced Control System

Equip with a touchscreen, PLC, and custom programming for intelligent control.

Efficient Production Capacity

Capable of producing 10 to 30 units per minute, ideal for medium-scale production lines.

Large-Capacity Oil Tank

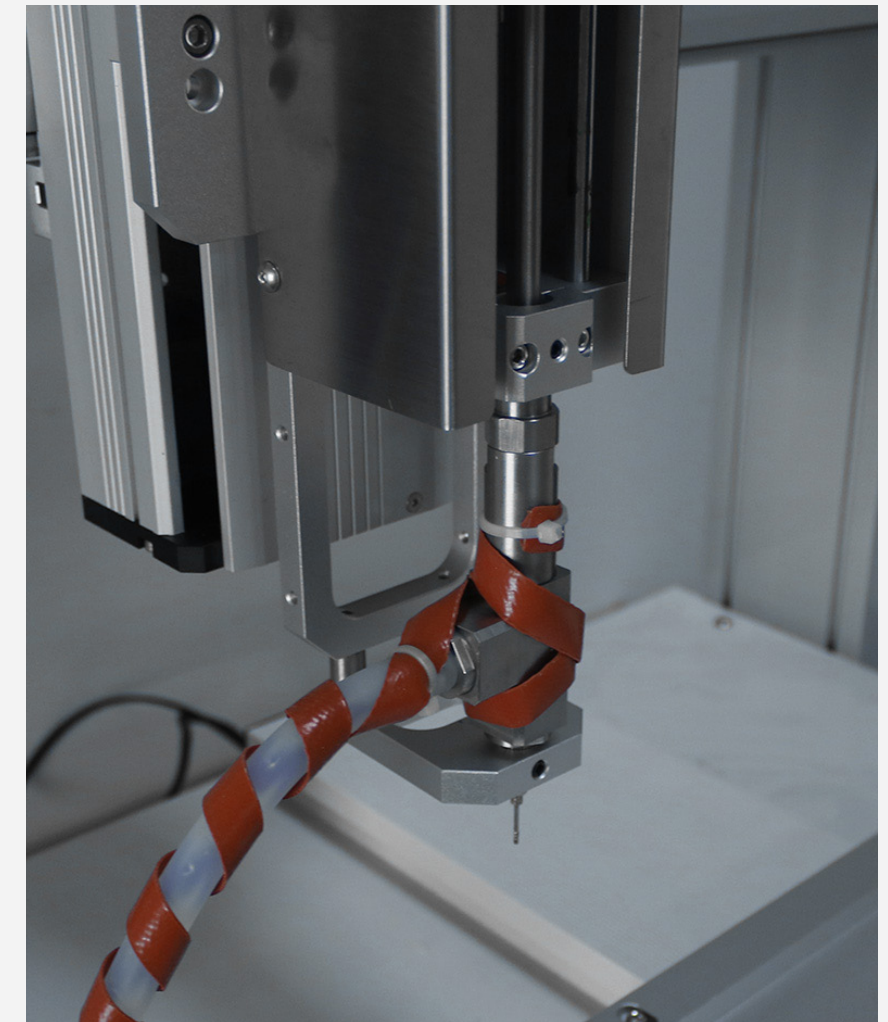
Come with a 3.0L tank featuring a stirring function to maintain uniformity.

Premium After-Sale Service

Provide a one-year warranty to safeguard customer interests.

Cross-Border Export

Designed as a dedicated supply for cross-border trade, meeting the demands of international markets.



1. ZW-350JY

Automatic Oil Filling Machine (Five Filling Heads)

Overview

The ZW-350JY is a high-efficiency automatic oil filling machine equipped with five filling heads, significantly enhancing filling efficiency. The filling heads are directly connected to the oil tank, resulting in a shorter oil path and improved stability.



· SUPERB QUALITY ·

· SUPERB QUALITY ·

Specifications

| | | | | | | | |
|----------------------------|-----------------|-------------------------|------------------------------------|--------------------------|-------------------|---|--------------------------|
| Model | ZW-350JY | Control Method | Touch Screen + PLC + Custom | Level of Automation | Automatic | Drive Method | Motor + Ball Screw |
| Customization | Support | Power Supply (Optional) | AC100V-120V; AC200V-240V | Oil Capacity | 1.5L | Power | 800W |
| Filling Heads | 5 | Applicable Use | CBD/THC/Nicotine Oil/Other Liquids | Production Capacity | 50-100pcs/min | Applicable Industry | CBD/THC/Vape/Cosmetics |
| Filling Volume | 0.2-3ml/0.2-5ml | Screen Size | 4.3 inches | Filling Accuracy | 0.01 | Packaging | Export Wooden Case |
| Applicable Bottle Diameter | Above 2 mm | Dimensions / Net Weight | 520*640*650mm/about 52kg | Applicable Bottle Height | 5-100mm | Dimensions with Wooden Case / Weight | 680*560*800mm/about 78kg |
| Working Principle | Injection Pump | After-Sale Service | 1-Year Warranty | Filling Principle | Negative Pressure | Whether Cross-Border Export Exclusive Supply Source | Yes |

Product Functions and Features

- High efficiency and excellent stability.
- The liquid is evenly heated through aluminum components, with three temperature sensors monitoring the temperature to ensure precise control across all parts of the heated liquid.
- The path from the oil tank to the injection pump is short, minimizing residue and eliminating waste after filling.
- The setup and operation interface is simple and easy to use.

High-Efficiency Production

Equip with 5 filling heads, with a production capacity of 50 to 100 units per minute, ideal for large-scale manufacturing.

High-Precision Filling

±1% filling accuracy ensures consistent volume in every unit.

Heating Function

ZW-350Y includes heating capabilities with a range from ambient temperature to 120°C, suitable for maintaining liquid fluidity under heated conditions.

User-Friendly Operation

Feature a touchscreen with PLC control and custom programs for easy operation.

Stable Performance

Motor and ball screw drive system ensure stable operation.

Broad Applicability

Compatible with bottles with diameters over 2mm and heights between 5 and 100mm, accommodating a variety of containers.

Flexible Customization Services

Provide tailored solutions to meet specific customer requirements.

Advanced Working Principles

Utilize injection pump and vacuum filling methods to guarantee accuracy and efficiency.

High Cost-Effectiveness

Combine high productivity, precision, and heating functionality for excellent value.

Reliable After-Sale Service

Provide a one-year warranty ensures customer satisfaction with their usage experience.

Cross-Border Export

Designed as a dedicated supply for cross-border trade, meeting the demands of international markets.



1. ZW-450

Automatic Oil Filling Machine

Overview

The ZW-450 is a fully automated machine that integrates automatic sorting, feeding, oil filling, and capping/pressing. It is primarily used for large-scale production of products such as CCEL and G5, significantly reducing labor and lowering costs for manufacturers. The machine completes capping/pressing approximately 3 seconds after oil filling, addressing the issue of oil leakage caused by leaving atomizers uncapped for extended periods. It features a rotary assembly line design, greatly reducing the machine's size and making it easy to transport.



· SUPERB QUALITY ·

· SUPERB QUALITY ·

Specifications

| | | | | | | | |
|----------------------------|-----------------|-------------------------|---|--------------------------|-------------------|---|-----------------------------|
| Model | ZW-450 | Control Method | Touch Screen + PLC + Custom Programming | Level of Automation | Automatic | Drive Method | Motor + Ball Screw |
| Customization | Support | Power Supply (Optional) | AC100V-120V; AC200V-240V | Oil Capacity | 1L | Power | 2500W |
| Filling Heads | 2 | Applicable Use | CBD/THC/Nicotine Oil/Other Liquids | Production Capacity | 15-30 pcs/min | Applicable Industry | CBD/THC/Vape/Cosmetics |
| Filling Volume | 0.2-3ml/0.2-5ml | Screen Size | 7 inches | Filling Accuracy | 0.01 | Packaging | Export Wooden Case |
| Applicable Bottle Diameter | Above 2 mm | Dimensions / Net Weight | 800*800*1400mm/about 305kg | Applicable Bottle Height | 5-100mm | Dimensions with Wooden Case / Weight | 920*1300*1600mm/about 350kg |
| Working Principle | Injection Pump | After-Sale Service | 1-Year Warranty | Filling Principle | Negative Pressure | Whether Cross-Border Export Exclusive Supply Source | Yes |

Product Functions and Features

- Each workstation is modularized for easy and quick inspection and replacement, facilitating ease of maintenance.
- Sorting, oil injection, and capping are integrated into one system for fully automated operation. The minimal interval time improves efficiency and prevents oil leakage.
- Specially developed operating system tailored for the workflow, more user-friendly, simple and easy to learn.
- Electric injection pump, high oil filling accuracy, high stability, and easy to clean.

Multifunctional Integration Integrate automatic liquid filling, capping, and sealing functions, enhancing production line efficiency.

High-Efficiency Production Capable of producing 15 to 30 units per minute, ideal for medium-scale production.

High-Precision Filling ±1% accuracy ensures consistent filling volumes for every unit.

Heating Function Include a heating feature, suitable for maintaining fluidity or improving the filling process for certain liquids.

User-Friendly Operation Feature a touchscreen with PLC and custom programming for simple and intuitive control.

Stable Performance Utilize a motor and ball screw drive system for reliable and smooth operation.

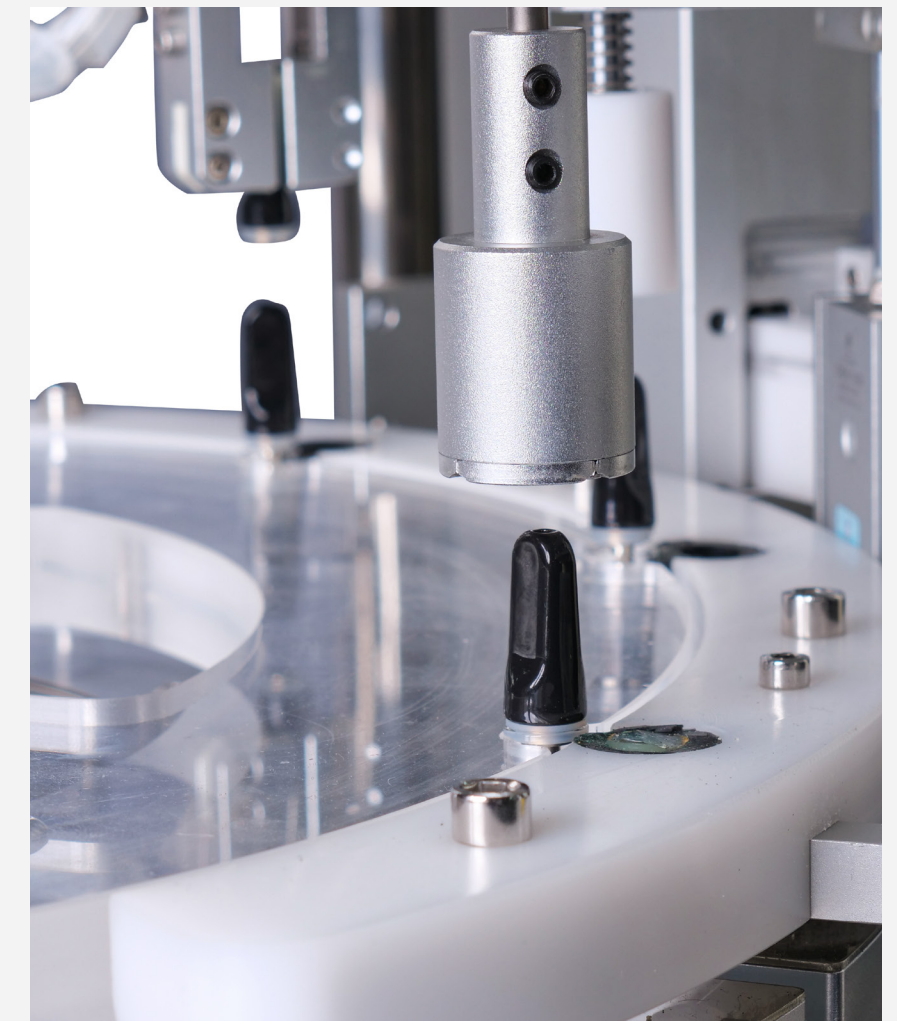
Broad Applicability Compatible with bottles over 2mm in diameter and heights between 5 and 100mm, accommodating a variety of containers.

Flexible Customization Services Offer tailored solutions to meet specific customer needs.

Advanced Working Principles Employ injection pump and vacuum filling methods for precise and efficient operation.

Reliable After-Sale Service Provide a one-year warranty to ensure a positive customer experience.

Cross-Border Export Ready Designed for cross-border trade, meeting the demands of international markets.



· SUPERB QUALITY ·

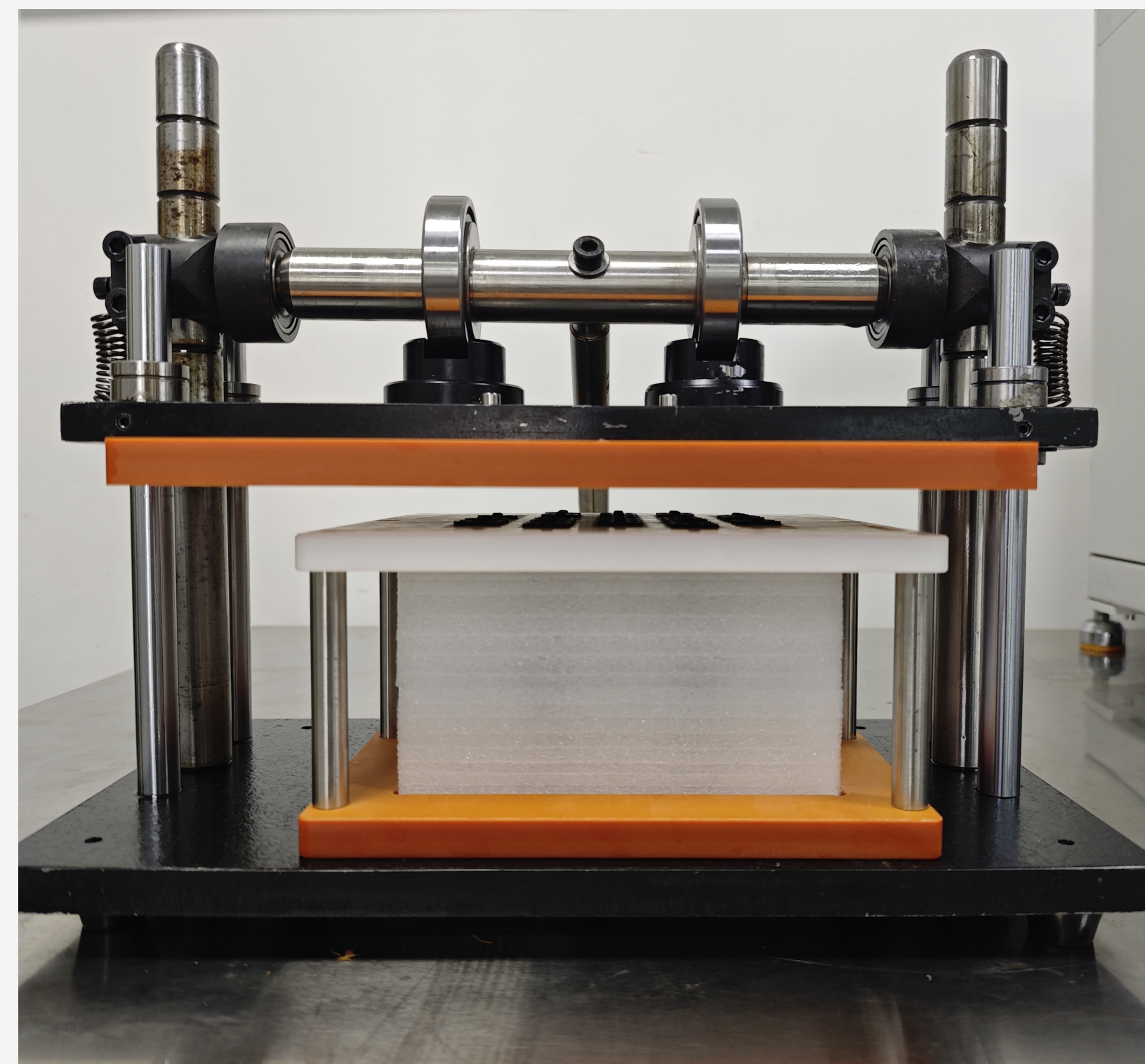
· SUPERB QUALITY ·

1. ZW-YMSD

Manual capping machine

Overview

The ZW-YMSD is a manual capping machine designed to further reduce the cost of small-batch production. In response to customer demand, we introduced this affordable manual model, featuring a simple structure and easy portability. The tested pressure can reach up to 2 tons, and the gap between the upper and lower pressing plates can be manually adjusted, making it compatible with various atomization devices of different heights.

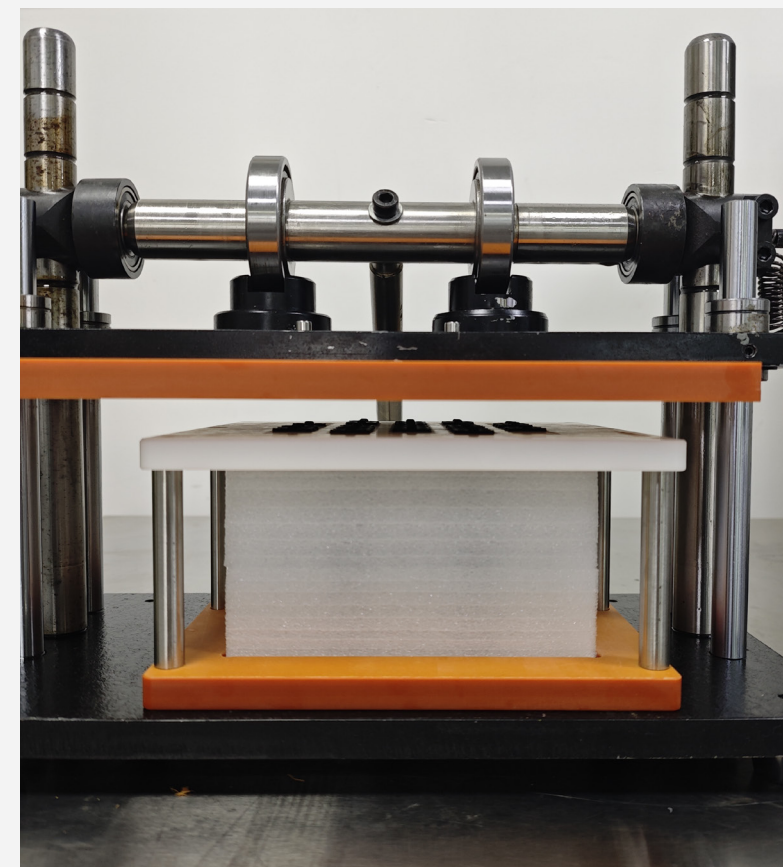


Product Functions and Features

- Purely manual, with no electrical components, and no limitations on usage scenarios.
- Excellent lever design allows for easy application of up to 2 tons of pressing force.
- The fully mechanical structure ensures stability and durability, with minimal after-sales issues.
- Affordable, making it ideal for prototyping and small-batch production needs.

设备参数

| | | | |
|--------------------------|----------------------------|---|-------------------|
| Model | ZW-YMSD | Level of Automation | Semi-automatic |
| Applicable Product Range | 45-190mm | Capping Range | 0-12mm |
| Maximum Pressure | 2T | Work Efficiency | about 100 pcs/min |
| Drive Method | Manual | Control System | Mechanical |
| Dimensions / Net Weight | 420*450*340mm/about 24.1kg | Packaging | Carton Packaging |
| After-Sale Service | 1-Year Warranty | Whether Cross-Border Export Exclusive Supply Source | Yes |



1. ZW-YM10T

Automatic Capping Machine

Overview

In response to the requests of our customers of addressing the issues of high noise and inconvenient control of the pneumatic capping machine, we launched the first generation electric capping machine in 2020. After three rounds of upgrades and optimizations, this model has gained widespread recognition from customers due to its outstanding performance. It is currently the best-selling capping machine on the market, widely used in industries such as e-cigarettes, CBD/THC, and cosmetics. The machine is available in two configurations: stepper motor and servo motor, providing customers with more choices to meet their different needs.



Product Functions and Features

- The pressing force can reach up to 10 tons, making it suitable for capping all CBD/THC devices on the market.
- The pressing stroke can be precisely adjusted via the screen, ensuring the cap is pressed into the correct position without damaging the product.
- Fully electric with no air pump, allowing for precise control of the pressing speed with minimal noise.
- The fully enclosed body, equipped with access control, ensures safety and reliability.

设备参数

| | | | |
|--------------------------------------|----------------------------|---|--------------------|
| Model | ZW-YM10T | Level of Automation | Automatic |
| Applicable Product Range | 45-120mm | Capping Range | 0-75mm |
| Maximum Pressure | 10T | Work Efficiency | about 120pcs/min |
| Drive Method | Motor + Lead Screw | Control System | PLC + Touch Screen |
| Screen Size | 3.5 inches | Packaging | Export Wooden Case |
| Power Supply (Optional) | AC100V-120V; AC200V-240V | Power | 2000W |
| Dimensions / Net Weight | 1230*450*550mm/about 136kg | After-Sale Service | 1-Year Warranty |
| Dimensions with Wooden Case / Weight | 1300*610*620mm/about 180kg | Whether Cross-Border Export Exclusive Supply Source | Yes |



② Nicotine Oil Filling Machine

ZW-100B20-21

ZW-36022-23

2. ZW-100B

High-Precision Oil Filling Machine

Overview

Handheld oil filling with automatic control of the filling volume and speed, no air pump required. It features simple operation, a compact size, and easy portability. This machine offers high precision, high efficiency, strong stability, and excellent flexibility.



· SUPERB QUALITY ·

· SUPERB QUALITY ·

Specifications

| | | | | | | | |
|----------------------------|----------------|-------------------------|-------------------------------------|--------------------------|---|---|-------------------------|
| Model | ZW-100B | Control Method | Touch Screen + PLC + Custom Program | Level of Automation | Semi-Automatic | Drive Method | Motor + Ball Screw |
| Customization | Support | Power Supply (Optional) | AC100V-120V; AC200V-240V | Oil Capacity | Negative pressure oil suction without the need of an oil tank | Power | 100W |
| Filling Heads | 2 | Applicable Use | CBD/THC/Nicotine Oil/Other Liquids | Production Capacity | 10-20 pcs/min | Applicable Industry | CBD/THC/Vape/Cosmetics |
| Single Filling Volume | 0.2ml-20ml | Screen Size | 7 inches | Filling Accuracy | 0.01 | Packaging | Carton Box |
| Applicable Bottle Diameter | Above 2 mm | Dimensions / Net Weight | 190*200*340mm/about 7kg | Applicable Bottle Height | Universal | Dimensions with Wooden Case / Weight | 370*240*265mm/about 8kg |
| Working Principle | Injection Pump | After-Sale Service | 1-Year Warranty | Filling Principle | Negative Pressure | Whether Cross-Border Export Exclusive Supply Source | Yes |

Product Functions and Features

- Fully electric equipment, no air pump required, ready to use by simply plugging in.
- The oil filling volume can be freely adjusted via the touchscreen.
- Negative pressure oil suction eliminates the need for an oil tank.
- Compact and easy to transport, suitable for various work environments.

High Precision

±1% filling accuracy, suitable for applications requiring high precision.

High Efficiency

Production capacity of 10-20 units per minute, ideal for batch production.

Strong Stability

Use precise motor and ball screw drive systems for stable long-term operation.

High Flexibility

Support various liquids, including e-liquids of all concentrations, CBD/THC oils, and nicotine oils.

User-Friendly Operation

Feature a touchscreen with PLC control and custom programs for easy operation.

Pump-Free Design

Use vacuum suction without needing an external pump, simplifying the structure.

Portable

Compact and easy to transport, suitable for various work environments.

Customization Support

Customization according to specific customer needs, providing personalized solutions.

No Heating Function

ZW-100B is an ideal choice for applications where heating is not required.

Wide Applications

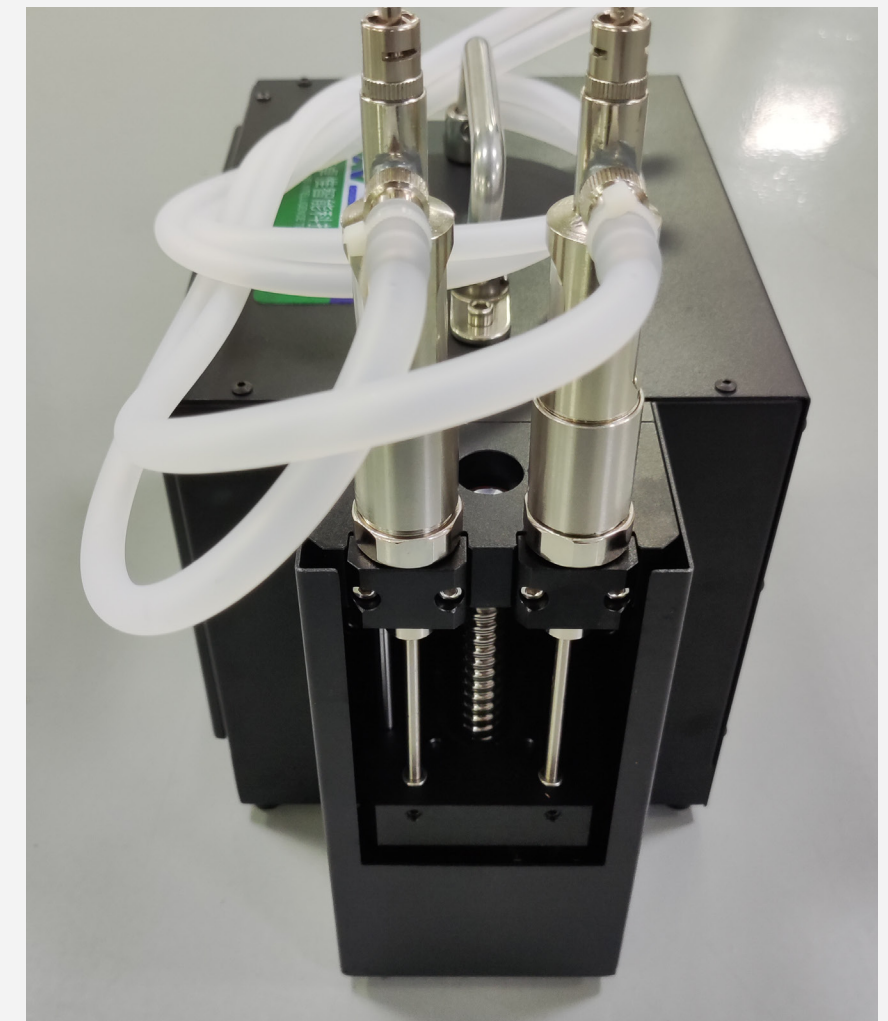
Suitable for various product types, including CBD/THC series, ceramic atomizers, and cotton core atomizers, meeting the filling needs of different industries.

After-Sale Service

Provide one year warranty to ensure customer rights and interests.

Cross-Border Export

Designed as a dedicated supply for cross-border trade, meeting the demands of international markets.



2. ZW-360

Automatic Oil Filling Machine (Single-Axis, Six Heads)

Overview

The automatic oil filling machine (single-axis, six heads) uses fully electric control for the filling process, eliminating the need for an air pump. It features simple operation, a compact size, and offers high precision, high efficiency, and strong stability. With six heads operating simultaneously, it significantly enhances production efficiency while ensuring product consistency.



· SUPERB QUALITY ·

· SUPERB QUALITY ·

Specifications

| | | | | | | | |
|----------------------------|----------------|-------------------------|-------------------------------------|--------------------------|--|---|--------------------------|
| Model | ZW-360 | Control Method | Touch Screen + PLC + Custom Program | Level of Automation | Automatic | Drive Method | Motor + Ball Screw |
| Customization | Support | Power Supply (Optional) | AC100V-120V; AC200V-240V | Oil Capacity | Negative pressure oil suction without the need of an oil tank. | Power | 550W |
| Filling Heads | 6 | Applicable Use | CBD/Nicotine Oil/Other Liquids | Production Capacity | 30-60pcs/min | Applicable Industry | CBD/THC/Vape/Cosmetics |
| Single Filling Volume | 0.2ml-20ml | Screen Size | 4.3 inches | Filling Accuracy | 0.015 | Packaging | Export Wooden Case |
| Applicable Bottle Diameter | Above 2mm | Dimensions / Net Weight | 520*640*650mm/about 46kg | Applicable Bottle Height | 5-100mm | Dimensions with Wooden Case / Weight | 570*700*795mm/about 68kg |
| Working Principle | Injection Pump | After-Sales Service | 1-Year Warranty | Filling Principle | Negative Pressure | Whether cross-border export exclusive supply source | Yes |

Product Functions and Features

- High precision, high efficiency, and strong stability.
- Simple operation with the ability to store 10 oil filling programs.
- Negative pressure oil suction eliminates the need for frequent manual refilling.
- Fully electric equipment, no air pump required, ready to use by simply plugging in.

High-Efficiency Production Equip with six filling heads, with a production capacity of 30 to 60 units per minute, suitable for medium to large-scale production needs.

High-Precision Filling ±1.5% accuracy, ideal for applications requiring precise filling.

User-Friendly Operation Control through a touchscreen with PLC and custom programming for intuitive and simple operation.

Stable Performance Motor and ball screw drive system ensure stable operation.

Broad Applicability Suitable for bottles with diameters over 2mm and heights between 5 to 100mm, accommodating various containers.

Flexible Customization Services Offer tailored solutions to meet specific customer needs.

Barrel-Free Design Use a vacuum suction method, eliminating the need for an oil barrel, simplifying the structure for easier cleaning and maintenance.

Non-Heating Design ZW-360 does not include a heating function, suitable for liquids that do not require heating for filling.

High Cost-Effectiveness Combine high productivity and precision without the added cost of heating components.

Reliable After-Sales Service Provide a one-year warranty to ensure a positive customer experience.

Cross-Border Export Ready Designed for cross-border trade, meet the demands of international markets.



③ Flower Filling Machine

ZW-210ZD25-26

ZW-230ZD27-28

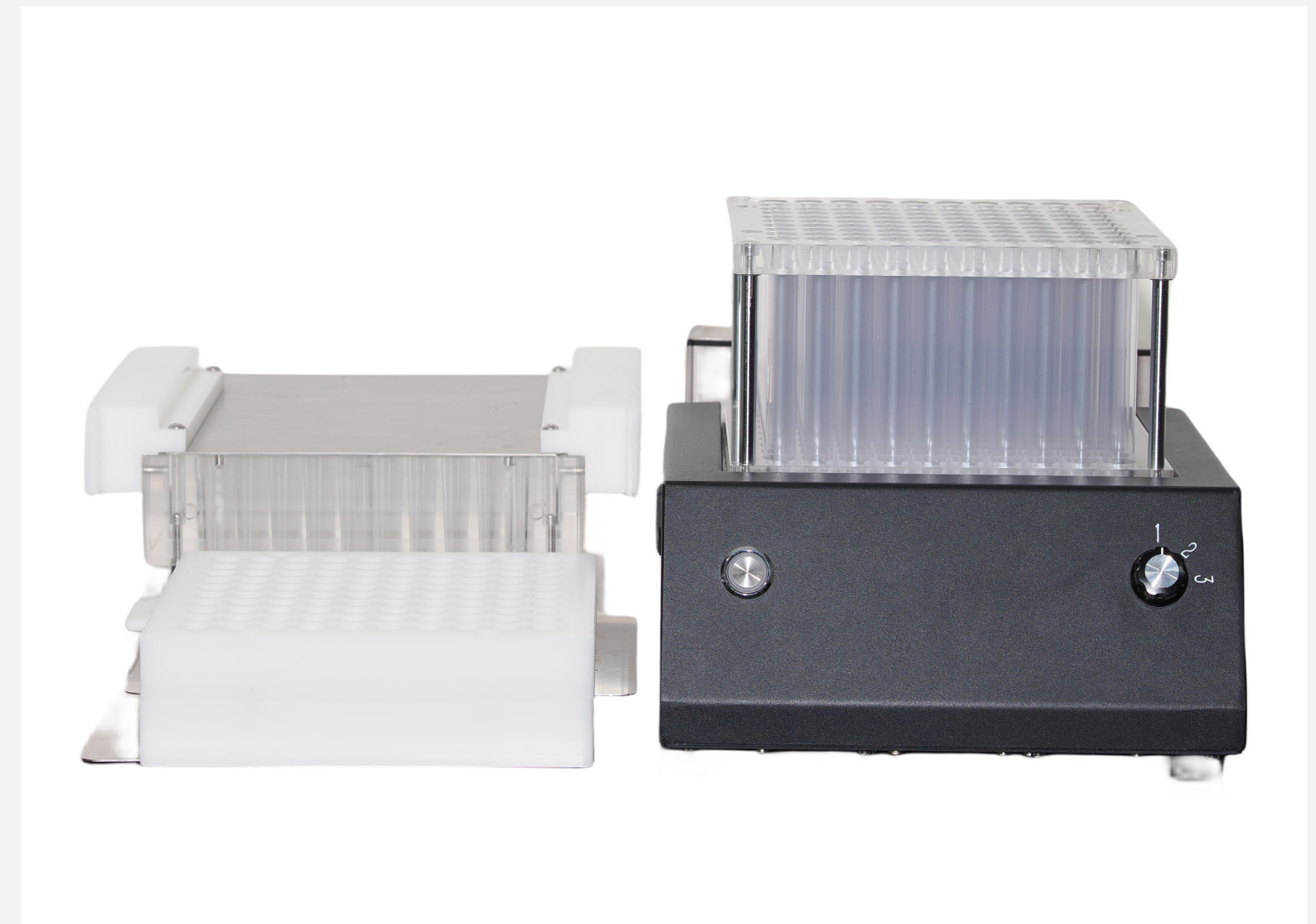
ZW-HF55029-30

3. ZW-210ZD

Semi-Automatic Flower Filling Machine

Overview

The ZW-210ZD is a small semi-automatic cannabis flower filling machine. It is equipped with a 100-hole jig, allowing 100 pre-rolls to be filled in one batch. The filling, compacting, and sealing processes are manually controlled. This machine offers simple operation, a small footprint, and excellent stability.



· SUPERB QUALITY ·

· SUPERB QUALITY ·

Manual Control

Although a semi-automatic machine, it allows manual control of filling, capping, and sealing functions, ideal for small-batch or customized production.

Easy Operation

Simple design makes it easy to understand and operate, reducing training costs.

Stable Performance

Ensure consistent operation even in manual filling mode.

Flexibility

Suitable for small businesses or laboratories that require frequent production batch changes.

Cost-Effective

More affordable compared to fully automatic equipment, offering excellent value.

Customization Services

Tailored solutions available to meet specific customer needs.

Broad Applicability

Designed for precision filling of products like cannabis flower rolls.

Portability

Compact dimensions (285×135×270mm) and lightweight (approximately 18.5kg), making it easy to move and install.

Premium After-Sale Service

Provide a one-year warranty to ensure a positive customer experience.

Cross-Border Export

Designed as a dedicated supply for cross-border trade, meeting the demands of international markets.

Product Functions and Features

- Manual filling ensures stable product quality.
- Takes up little space and is easy to move.
- Adopts a brushless motor, ensuring a longer lifespan.
- Utilize a clever structure for integral molding, and eliminate the need for hand-twisting to seal, resulting in higher efficiency and more compact formed products.

Specifications

| | | | |
|-------------------------|----------------------------|---|----------------------------|
| Model | ZW-210ZD | Level of Automation | Semi-Automatic |
| Single Batch Output | 100 pcs | Production Capacity | 10-15 pcs/min |
| Filling Accuracy | Manual Filling | Drive Method | Electric |
| Control Method | Electrical Control | Power | 75W |
| Power Supply (Optional) | AC100V-120V; AC200V-240V | Applicable Industry | Cannabis Flower Pre-Rolls |
| Customization | Support | Packaging | Export Wooden Case |
| Dimensions / Net Weight | 285*135*270mm/about 18.5kg | Dimensions with Wooden Case / Weight | 500*410*300mm/about 24.5kg |
| After-Sale Service | 1-Year Warranty | Whether Cross-Border Export Exclusive Supply Source | Yes |

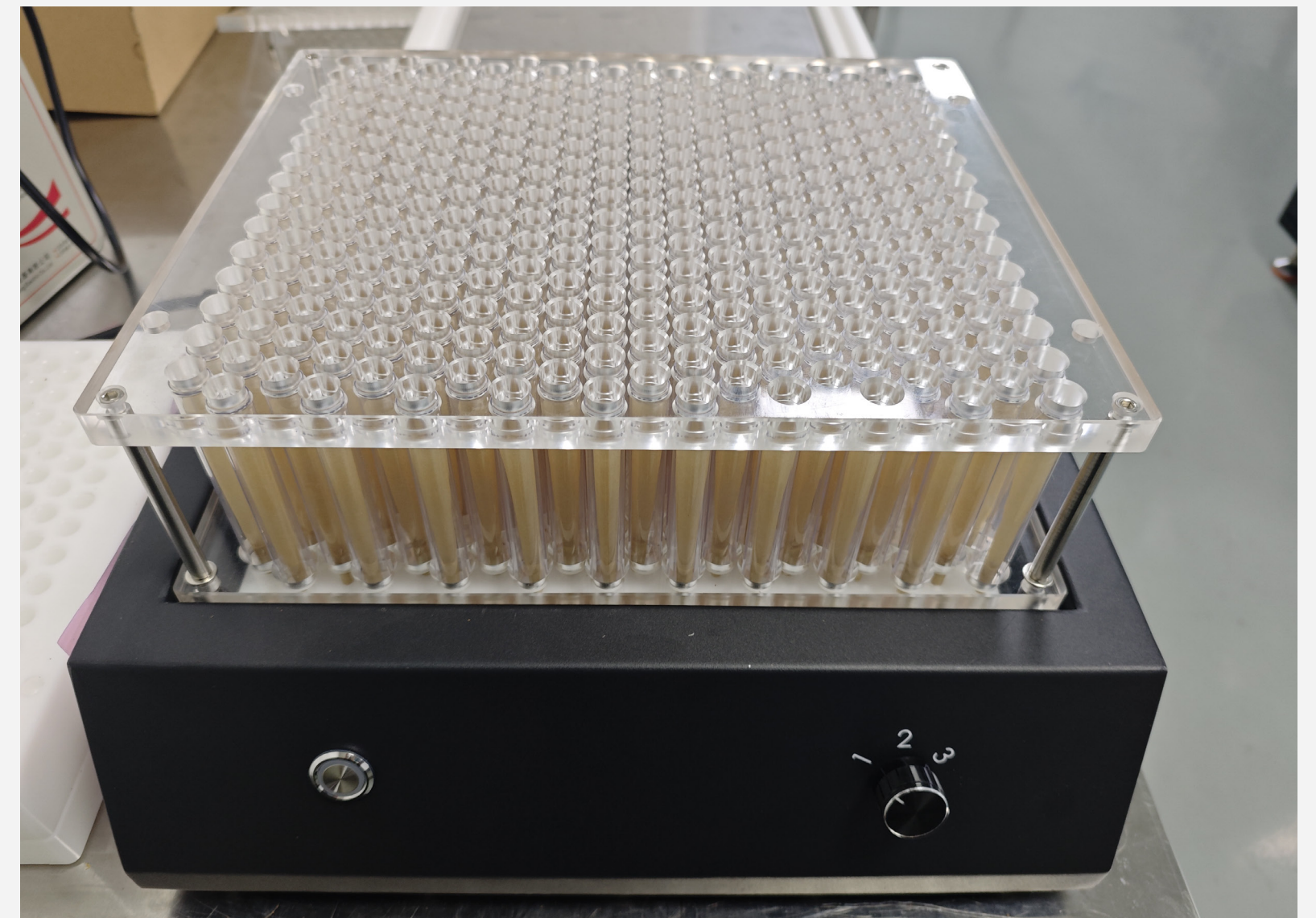


3. ZW-230ZD

Semi-Automatic Flower Filling Machine

Overview

The ZW-230ZD is a derivative model based on the ZW-210ZD, with similar functions and usage. To meet the demands of large-scale production, its structure has been enhanced, allowing it to fill 300 pre-rolls in a single batch. The filling, compacting, and sealing processes are manually controlled. It offers simple operation, a small footprint, and excellent stability.



· SUPERB QUALITY ·

· SUPERB QUALITY ·

- Manual Control** Enable manual filling, capping, and sealing, suitable for production processes that require hands-on involvement.
- Easy Operation** Simple design makes it easy to operate, reducing the learning curve and operator training time.
- Stable Performance** Maintain reliable performance even under manual filling conditions.
- Flexibility** Ideal for frequent parameter adjustments or small-batch production.
- Cost-Effective** As a semi-automatic machine, the ZW-230ZD offers a lower cost compared to fully automated equipment, suitable for budget-conscious businesses.
- Customization Services** Provide tailored solutions to meet specific customer needs.
- Industry Applications** Particularly well-suited for precision filling like cannabis flower roll production.
- Portability** Compact dimensions (365×415×135mm) and relatively lightweight (about 38kg), allowing for easy movement and setup.
- Premium After-Sale Service** Provide a one-year warranty to ensure a positive customer experience.
- Cross-Border Export** Designed as a dedicated supply for cross-border trade, meeting the demands of international markets.

Product Functions and Features

- Manual filling ensures stable product quality.
- A higher number of pre-rolls can be filled in one batch, increasing efficiency and making it suitable for medium-scale production.
- Adopts a brushless motor, ensuring a longer lifespan.
- Utilize a clever structure for integral molding, and eliminate the need for hand-twisting to seal, resulting in higher efficiency and more compact formed products.

Specifications

| | | | |
|-------------------------|------------------------------|---|---------------------------|
| Model | ZW-230ZD | Level of Automation | Semi-Automatic |
| Single Batch Output | 300pcs | Production Capacity | 15-20pcs/min |
| Filling Accuracy | Manual Filling | Drive Method | Electric |
| Control Method | Electrical Control | Power | 75W |
| Power Supply (Optional) | AC100V-120V; AC200V-240V | Applicable Industry | Cannabis Flower Pre-Rolls |
| Customization | Support | Packaging | Export Wooden Case |
| Dimensions / Net Weight | 38kg365*415*135mm/about 38kg | Dimensions with Wooden Case / Weight | 420*500*660mm/about 48kg |
| After-Sale Service | 1-Year Warranty | Whether Cross-Border Export Exclusive Supply Source | Yes |



3. ZW-HF550

Automatic Flower Filling Machine

Overview

The ZW-HF550 is a fully automatic cannabis flower filling machine that integrates automatic feeding, weighing, filling, sealing, trimming excess material, and discharging into one system. This model offers non-standard customization, with functions, operation interface, and dimensions tailored to meet customer requirements. Since its launch in 2020, the machine has undergone three upgrades. With years of experience and continuous refinement based on user feedback, the latest generation has reached industry-leading standards in terms of structure, functionality, programming, and stability.



· SUPERB QUALITY ·

· SUPERB QUALITY ·

Multifunctional Integration Combine filling, capping, and sealing functions, reducing time and cost associated with process transitions.

Flexible Customization Services Offer tailored solutions to meet specific customer needs.

High-Precision Filling ±2.5% filling accuracy ensures consistency and product quality.

Advanced Working Principles Employ innovative filling methods to ensure accuracy and efficiency.

Efficient Production Capacity Produce 20 to 25 units per minute, suitable for medium-scale production.

Large-Capacity Storage Tank Equip with a 5L tank, with customization options to meet different production scales.

User-Friendly Operation Control via a touchscreen with PLC and custom programming for intuitive and easy operation.

Reliable After-Sale Service Provide a one-year warranty to ensure a positive customer experience.

Stable Performance Utilize electric drive systems to ensure smooth and reliable operation.

Cross-Border Export Ready Designed for cross-border trade, meeting the demands of international markets.

Product Functions and Features

- Adopts a fully automated mechanical structure, requiring only raw materials and finished product collection, suitable for large-scale factory production.
- Fully automated process with high production efficiency; products meet weight standards, have consistent appearance, and meet aesthetics and well-arranged.
- Modularize each component, and facilitate quick testing, inspection, and maintenance.
- The operation system is simple and clear, easy to use. The machine startup interface and machine control interface support different security levels, reducing operational risks for employees.

Specifications

| | | | |
|-------------------------|-------------------------------------|---|--------------------|
| Model | ZW-HF550 | Level of Automation | Automatic |
| Customization | Support | Flower Bud Barrel Capacity | 5L |
| Filling Accuracy | Dual Heads | Production Capacity | 15-20pcs/min |
| Filling Volume | 0.5-2g | Filling Accuracy | ±5% |
| Applicable Cone Shapes | Tapered | Applicable Cone Length | 84-109mm |
| Control Method | Touch Screen + PLC + Custom Program | Drive Method | Motor + Cylinder |
| Power Supply (Optional) | AC100V-120V; AC200V-240V | Power | 1200W |
| Screen Size | 7 inches | Packaging | Export Wooden Case |
| Dimensions | 1100*1050*1450mm | Dimensions with Wooden Case / Weight | 280k |
| After-Sale Service | 1-Year Warranty | Whether Cross-Border Export Exclusive Supply Source | Yes |





MACHINERY DIRECTIVE ATTESTATION OF CONFORMITY

Technical file of the company mentioned below has been inspected and audit has been completed successfully.

2006/42/EC Machinery Directive Annex VIII has been taken as references for these processes.
Company Name : **Dongguan ZhuoWei Intelligent Technology Co., Ltd**

Company Address : Tongsheng Science Park, No. 226-1, Zongdai Road, Dalingshan Village, Dalingshan Town, Dongguan, China

Related Directives and Annex : **2006/42/EC Machinery Directive/Annex VIII**

Related Standards : **EN ISO 12100:2010, EN 60204-1:2018, EN 415-10:2014**

Product Name : **filling machine**

Report No and Date : **FMTCF1214-MD**

Product Brand/Model/Type : **ZW-221,ZW-221F,ZW-221L,ZW-221S,ZW-JY350,ZW-360,ZW-100R,ZW-JY03,ZW-450,ZW-YM10T**

Certificate Number : **M.2023.206.C94273**
Initial Assessment Date : 15.12.2023
Registration Date : 18.12.2023
Reissue Date/No : -
Expiry Date : **17.12.2028**

[Signature]
UDEM International Certification
Auditing Training Centre Industry
and Trade Inc. Co.



The validity of the certificate can be checked through www.udem.com.tr. Upon completion of EC declaration of conformity, it is used solely at the manufacturer's responsibility. This certificate remains the property of UDEM International Certification Auditing Training Centre Industry and Trade Inc. Co. to whom it must be returned upon request. The above named firm must keep a copy of this certificate for 15 years from the registration of certificate. This certificate only covers the product(s) stated above and UDEM must be notified in case of any changes on the product(s).
Address: Multifunkent Mahallesi 2073 Sokak [Eski 93 Sokak] No:10 Çankaya - Ankara - TURKEY
Phone: +90 0312 443 03 90 **Fax:** +90 0312 443 03 76
E-mail: info@udem.com.tr www.udem.com.tr

FDA TEST REPORT

Applicant : Dongguan Zhuo Wei Intelligent Technology Co., LTD
Address : Room 404, 226-2, Longjie Road, Dalingshan Town, Dongguan City, Guangdong Province
Report on the submitted sample said to be :
Sample name : 316 Syringe
Model : 316 Syringe(DM)
Material : 316 stainless steel
Manufacturer : Dongguan Zhuo Wei Intelligent Technology Co., LTD
Address : Room 404, 226-2, Longjie Road, Dalingshan Town, Dongguan City, Guangdong Province
Sample received date : Aug 15, 2024
Testing period : Aug 15, 2024 - Aug 26, 2024

| Test Sample | Test Requirement | Conclusion |
|-------------|--|------------|
| 316 Syringe | For material which contact with foodstuff, selected tests were performed for compliance with the regulations US Food and Drug Administration (FDA) With reference to FDA-21 CFR 175.305 Resinous and polymeric coatings. | Pass |

Signature and Stamp of Shenzhen CDT Testing Technology Co., Ltd.
Drafted By: *[Signature]* Review By: *[Signature]* Approved By: *[Signature]*
Zhang Guoqiang Report writer Liu Yong Report Reviewer Wang Jian Report Technical Supervisor

Test Report

| Test Items | Test conditions | Unit | Limit | Results | Conclusion |
|--|-----------------------------------|---------------------|-------|---------|------------|
| Maximum extractable traction in Distilled water | Bring to a boil then cool to 100T | mg/in. ² | 18 | <3.0 | Pass |
| Maximum extractable traction in phosphate buffer | 120T, 0.25h | mg/in. ² | 18 | <3.0 | Pass |
| Maximum extractable traction in 95.5% ethanol | 158T, 2h | mg/in. ² | 18 | <3.0 | Pass |

Test Item Description:
No. 1 Delivery metal

Note:
(1) 1 mg/in.² = milligram per square inch;
(2) T=Fahrenheit Degree;
(3) h=hour;
(4) The client specified the material test.



MACHINERY DIRECTIVE ATTESTATION OF CONFORMITY

Technical file of the company mentioned below has been inspected and audit has been completed successfully.

2006/42/EC Machinery Directive Annex VIII has been taken as references for these processes.
Company Name : **Dongguan ZhuoWei Intelligent Technology Co., Ltd**

Company Address : Tongsheng Science Park, No. 226-1, Zongdai Road, Dalingshan Village, Dalingshan Town, Dongguan, China

Related Directives and Annex : **2006/42/EC Machinery Directive/Annex VIII**

Related Standards : **EN ISO 12100:2010, EN 60204-1:2018**

Product Name : **Capping Machine**

Report No and Date : **KEYS240725052001-LD-01**

Product Brand/Model/Type : **ZW-YM10T,ZW-YM7T,ZW-YM01,ZW-YM03,ZW-YM06,ZW-YM07,ZW-YM09**

Certificate Number : **M.2024.206.C104822**
Initial Assessment Date : 02.08.2024
Registration Date : 05.08.2024
Reissue Date/No : -
Expiry Date : **04.08.2029**

[Signature]
UDEM International Certification
Auditing Training Centre Industry
and Trade Inc. Co.
Mustafa MEMISOGLU
General Manager



The validity of the certificate can be checked through www.udem.com.tr. Upon completion of EC declaration of conformity, it is used solely at the manufacturer's responsibility. This certificate remains the property of UDEM International Certification Auditing Training Centre Industry and Trade Inc. Co. to whom it must be returned upon request. The above named firm must keep a copy of this certificate for 15 years from the registration of certificate. This certificate only covers the product(s) stated above and UDEM must be notified in case of any changes on the product(s).
Address: Multifunkent Mahallesi 2073 Sokak [Eski 93 Sokak] No:10 Çankaya - Ankara - Turkey
Phone: +90 0312 443 03 90 **Fax:** +90 0312 443 03 76
E-mail: info@udem.com.tr www.udem.com.tr

TEST REPORT
EN ISO12100:2010; EN 60204-1:2018;
Safety of machinery - General principles for design - Risk assessment and risk reduction (ISO 12100:2010)
Safety of machinery - Electrical equipment of machines - Part 1: General requirements

Report Number: KEYS240725052001-LD-01
Date of Issue: July 26, 2024
Total number of pages: 60 pages
Tested by (name + signature):
Approved by (name + signature):
Testing Laboratory: Guangdong KEYS Testing Technology Co., Ltd.
Address: Building 1, No.18, Shihuan Road, Dongcheng Subdistrict, Dongguan, Guangdong, China
Applicant's name: Dongguan ZhuoWei Intelligent Technology Co., Ltd
Address: Tongsheng Science Park, No. 226-1, Zongdai Road, Dalingshan Village, Dalingshan Town, Dongguan
Manufacturer name: Dongguan ZhuoWei Intelligent Technology Co., Ltd
Address: Tongsheng Science Park, No. 226-1, Zongdai Road, Dalingshan Village, Dalingshan Town, Dongguan

Test specification:
Standard: EN ISO12100:2010; EN 60204-1:2018;
Test procedure: CE-MD
Non-standard test method: N/A
General disclaimer: The test results presented in this report apply only to the object tested. This report shall not be reproduced, except in full, without the written approval of the issuing KEYS Testing Laboratory.
Test Report Form No.: EN ISO12100:2010; EN 60204-1:2018
Product: capping machine
Trade Mark: N/A
Manufacturer: Dongguan ZhuoWei Intelligent Technology Co., Ltd
Main Model/Type reference: ZW-YM10T, ZW-YM7T, ZW-YM01, ZW-YM03, ZW-YM06, ZW-YM07, ZW-YM09
Rating: AC 110-240V; 50/60Hz; 1000W

List of Attachments (including a total number of pages in each attachment):
Attachment : 3 page of photos.
Summary of testing: N/A
Tests performed (name of test and test clause):
EN ISO 12100:2010 Safety of machinery - General principles for design - Risk assessment and risk reduction (ISO 12100:2010) (EN 60204-1:2018) Safety of machinery - Electrical equipment of machines - Part 1: General requirements
Testing location: Guangdong KEYS Testing Technology Co., Ltd Building 1, No.18, Shihuan Road, Dongcheng Subdistrict, Dongguan, Guangdong, China Tel: +86(0755)20792319 <http://www.keys-lab.com> E-mail: info@keys-lab.com
Summary of compliance with National Differences
List of countries addressed:
D The product fulfills the requirement of:
EN ISO12100:2010; EN 60204-1:2018
Additional notes: ZW-YM10T, ZW-YM7T, ZW-YM01, ZW-YM03, ZW-YM06, ZW-YM07, ZW-YM09. All models are similar in construction except for appearance, power and names.

THANK YOU!

SUPERB QUALITY, PRIME PRECISION, UNRIVALED PERFECTION

<https://zwintelligent.com/>

